

# EDISON & SCIENCE LEARNING COMMUNITY

## Engineering (PLTW! – An Honors Program!)



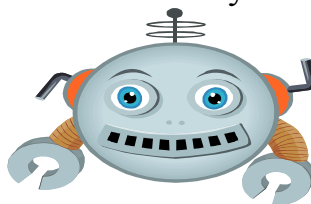
**Example courses:**  
Introduction to Engineering Design  
Principles of Engineering  
Digital Electronics  
Computer Integrated Manufacturing  
Engineering Design & Development



## Mathematics & Science



**Example Courses:**  
Honors & AP Physics  
Honors & AP Chemistry  
Algebra. Pre-Calculus  
Nuclear Radiation  
Astronomy



## Medical Preparatory Program



**Example Courses:**  
First Aid/Chemistry  
Honors/AP Biology Honors  
Anatomy and Physiology  
Biotechnical Engineering (2011-12)  
Executive (Medical) Internship



- **Discovery** and invention plunge students into the excitement surrounding the sciences and technology.
- **Mastery** of problem-solving skills by completing courses in Engineering, Health Sciences and other science related fields.
- **Solve** real world problems with hands-on activities using state-of-the-art software and laboratory settings creating a new green house, designing and implementing robotic fish feeders and aids for the Aquaculture program; research the stars in the newly built Planetarium.
- **Opportunities** in CTE courses to acquire college hours to be applied to future college courses.

### Highlights include:

- Content and activities that appeal to students who enjoy math, science and technology classes.
- Engineering geared for interest in architecture, aerospace, manufacturing, robotics, rocketry, digital electronics and technology-based medicine.
- Medical Prep. geared for interests in all levels, including Cardiology, Vascular Medicine, Neuro Medicine, Nuclear Medicine, Pharmaceuticals, Dentistry, Physician Assistant, Nursing, and Biotechnical engineering (biomechanics, genetic engineering, and forensics).
  - Although most medical career interests fall under Edison SLC, each small learning community offers appropriate medical pathways. Those students interested in sports medicine (physical therapy, orthopedics) would join the Championship SLC; students interested in veterinarian sciences would join the Cousteau SLC; and students interested in art or music therapy would join the Creative Arts SLC.